

Technical Bulletin

Model
911C2/C4

Group
1

Subject: Crankcase Mounting Bolt Seals

Part Identifier
1010

Number
9107

ATTENTION: Service Manager/Service Technician

Models Affected: *911 Carrera 2 and 911 Carrera 4 Model Year 90 (L)*

Concern: Different arrangement of crankcase mounting bolt sealing rings and washers.

Vehicle Information: Some crankcases were assembled in production with two sealing rings and modified sealing washers under the nuts of the crankcase mounting bolts (Figure 1).

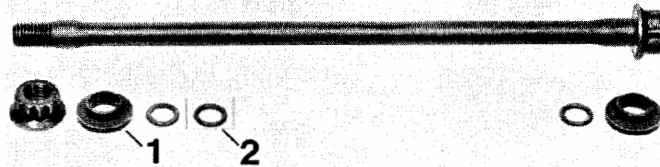


Figure 1

1-Modified sealing washer
2-Additional sealing ring

Engine number ranges:

62L11289 through 62L11307 manual transmission

62L12581 through 62L12801 manual transmission

62L51104 through 62L51140 Tiptronic

Repair Information:

When assembling crankcases within the above engine number ranges, the two new sealing rings along with the modified washers must be reinstalled under the nuts of the crankcase mounting bolts.

The modified washers are shortened to 5.8mm (new washers-6.3mm). If a washer is lost or damaged, a new washer Part Number 964 101 313 02 must be reworked to dimension 3.3-0.1mm as shown in Figure 2.

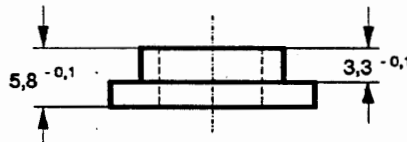


Figure 2

Note: This information applies only to the original crankcases and not to replacement crankcases.

PORSCHE CARS NORTH AMERICA, INC.

